



KONICA MINOLTA

## bizhub color: business\_by design

bizhub C451  
bizhub C550  
bizhub C650

CONNECT\_

COMMUNICATE\_

CONTROL\_

design that will transform the look, feel  
and workflow of your office.

design that carries your information to the next level.

- \_ connects your workgroups and branches, customers and suppliers.
- \_ communicates with greater impact.
- \_ controls the flow of information with speed and security.

design that makes you more productive.  
more cost-efficient. more competitive.

business by design ...with **bizhub color.**

---



Seixang Nord

**bizhub c550**

1  
2  
3  
4

## better by design: bizhub C451/C550/C650

This revolutionary bizhub series is unlike anything you've seen before. Its color is dramatically different. Its operation is amazingly simple. And its styling looks great from any angle, for center-office placement and 360° access. With looks this good, your new bizhub deserves a prominent position at the hub of your business – to move information more quickly, output documents more effectively, and power up your productivity.



**Work flows when you follow the InfoLine.** Business by design begins with a business partner that communicates – with status lights that follow the flow of input/output, informing you of message transmission/reception, device operating status, maintenance alerts and more, with links to network and control panel for seamless interface between you and your bizhub.

**Bigger, brighter, better controls.** Your bizhub command center is a large 8.5" color LCD touch-screen with high-contrast TFT design. It speeds operation with short-cut keys you can customize for your workflow, menus that are easier to navigate, and thumbnail preview of documents before you print.

**Universal design.** Business by design complies with Section 508, allowing easier access for every employee. The control panel tilts and rotates left or right to accommodate wheelchair access, with larger display and blue LED function key lights that are easier to see for the visually impaired. Paper drawers are also easier to open – and documents show up better against a dark output tray.



**A scalable solution.** Business by design grows with your needs – and bizhub color comes in models for every business need: C451 with 45 ppm output in color and B&W, C550 with 45 ppm color and 55 ppm B&W, and C650 with 50 ppm color and ultra-high-speed 65 ppm B&W output. You'll also have flexible options and software enhancements to customize a right-sized solution for your workflow.



# innovative design ideas: bizhub core technologies.

Business by design is more than skin deep – and bizhub provides competitive advantages that are built-in. You'll have core technologies that raise the bar and empower your people, with print control right out of the box. And truly spectacular color for documents that communicate, motivate and persuade – plus cost-effective B&W for everyday print/copy needs, making bizhub the ideal replacement for your current monochrome or color multifunctional devices.



**bizhub OP:** Design for greater productivity. The proprietary bizhub OP (Open Platform) control system adheres, adapts and expands to the needs of your growing IT infrastructure. For powerful printing, simple operation and seamless software integration, bizhub OP is a real design advantage.

- **The power of Emperon™ printing.** The Emperon Print System gives your bizhub built-in PCL6 and PS3 emulation, for full print/scan/copy functionality right out of the box.
- **The beauty of bizhub Open API.** Hardware and software are designed to work together, by means of an Open API (Application Program Interface) that accommodates 3rd-party software for business needs such as cost recovery, account management, automated print control and more.
- **The simplicity of bizhub Architecture.** With major functions consolidated in uniform processing modules, bizhub operates with smooth, consistent simplicity and security – streamlining your workflow and reducing the need for operator training.



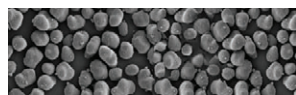
**Toner changing on the fly.** Replacing toner bottles is quick and clean – and you can do it without interrupting your print/copy run. You'll also have the benefit of a new high-capacity toner cartridge for B&W printing, to help lower your total cost of ownership.

**High-impact, high-definition color.** Simitri® HD Color Polymerized Toner (below) gives bizhub documents high-impact, high-definition color – sharper text and fine detail, smoother gradations, richer tonality, superior color graphics and halftone reproductions.

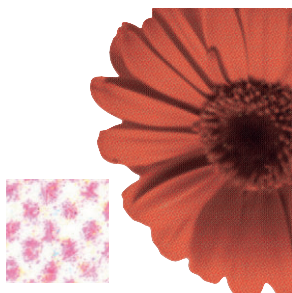
**Color that won't fade, peel or crack.** With oil-less toner fusing at lower temperature, bizhub gives you fade-resistant low-gloss color output – so you can fold, overprint or write on prints and copies with no compromise in quality.



Simitri HD



Simitri HD  
High Definition Polymerized Toner



Pulverized



# design that handles business information better.

Business by design moves information more quickly and in more directions. Faster scanning. Simultaneous distribution. More flexible input, output and throughput – from a central document resource that lets you eliminate redundant equipment. Backed by a full suite of software solutions for web-based monitoring and network control, integrated IP addressing, personal document management and more. Because more is what it takes to compete.

**More power with PageScope™ software.** An integrated bizhub software suite that works together and speeds your workflow:

**PageScope Data Administrator™** manages device user lists and enables account tracking, and helps you set up one-touch Email addresses and manage password and security functions.

**PageScope Web Connection** gives each bizhub its own “website” for status monitoring.

**PageScope Net Care** lets IT administrators manage systems more easily by combining bizhub and other MIB-compliant devices in a single network.

**PageScope Print Status Notifier** sends a pop-up dialog box to your PC screen to notify you that your bizhub job has finished printing, paper has run out or toner needs replacing.

**PageScope Workware™** (optional) makes it easier to manage scanned documents, view files as thumbnail images, link files, convert file formats and scan and distribute in a single step.

**PageScope™ Box Operator.** From your PC, you can download and access scanned data stored in User Boxes — with thumbnail file preview, direct printing and faxing, and file conversion from PDF, TIFF or JPEG to ultra-compact PDF format.

**Enhanced User Box functions.** Assign User Boxes to individuals, departments or workgroups, even allocate User Boxes by theme, project or goal to share and group documents more efficiently. You can also search through thumbnails to find any User Box file quickly and easily.

**IPv6: The next-generation Internet protocol.** IPv6 dramatically increases IP addressing power and gives every networked device its own IP address to facilitate communication and improve security.

**Compact PDF for smaller file size.** Create high-quality color document files that are smaller in size – and faster to send and receive.

**Quick and simple bizhub Send.** In a single operation, the bizhub Send feature lets you send data by Email and fax to multiple destinations – and simultaneously store a User Box copy or save the file to SMB or FTP.

**Bring information into your system faster.** With high-productivity Auto Document Feeders, your bizhub can scan at up to 75 opm<sup>1</sup> – more than a page every second, including the ability to handle thick or thin paper.

**Any document to any destination.** Scan-to-Email, attaching documents as PDF, JPEG or TIFF files. Scan to FTP, for quick access via any PC on your network. Scan to SMB, sending files to shared folders on desktop PCs. Scan-to-User Box, saving files on the hard disk drive of your bizhub. Or perform TWAIN scanning from PCs.

**Scan Annotation for document ID.** Documents stored in an Annotation User Box will be automatically numbered and identified for document management purposes.

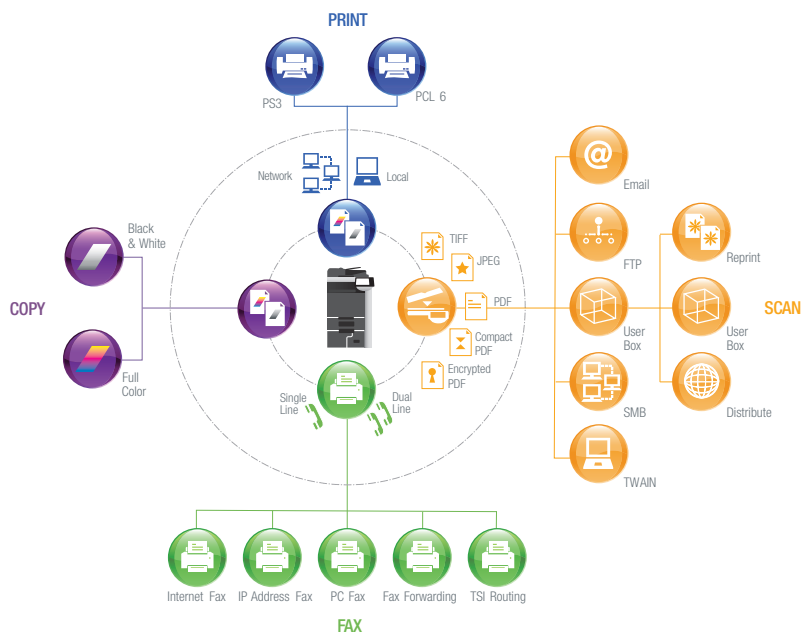
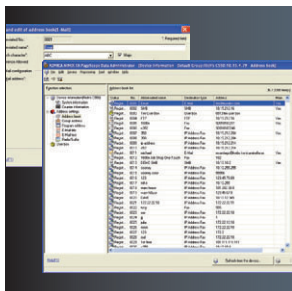
**Portable Scan for documents to go.** With bizhub, you can scan files to USB Thumb-drive<sup>2</sup> and print from a USB Thumb-drive<sup>3</sup> – including files in PDF, Compact PDF, JPEG, TIFF and encrypted PDF formats.

**Add high-volume fax to your system.** For all-in-one functionality, the FK-502 Super G3 fax option provides direct faxing from your PC, IP Address fax capability, TSI routing, 2,000-location address book, broadcasting and program dialing – and the optional ML-501 Fax Multi-Line Kit adds a second phone line to double your input/output traffic.



PageScope Web Connection

PageScope Data Administrator



<sup>1</sup> Varies by model / <sup>2,3</sup> Not available at time of launch

# business by design means faster, higher-impact documents.

With bizhub color, you'll have documents that work harder to sell, serve and support your goals. Create spectacular color brochures and direct mailers. Output everyday reports and forms in cost-effective B&W. Print and finish booklets for human resources. Power up your presentations with complex color charts and graphics. Add cover sheets and chapter dividers. And do all your printing with in-house, on-demand speed, convenience and economy.

**Designed for speed when you need it.** All three bizhub models produce both color and B&W documents at blazing speeds. And all have some of the fastest first-copy times in the industry, even in color.

**The right paper for any application.** Your bizhub accepts 12" x 18" maximum paper size for two-page spreads that preserve margins and crop marks, auto duplexes up to 140 lb. index stock from all trays, prints on heavy cover stock, envelopes and coated paper.

**Higher capacity for longer unattended runs.** An optional LU-301 Large Capacity Unit holds 3,000 sheets, raising maximum paper capacity to 6,650 sheets.

**100% duplex productivity.** With a new reversing section using a special roller for reverse direction, your bizhub maintains 100% productivity when duplex printing – and outputs duplex pages at rated engine speed, so 2-sided color output never slows you down.

**Run off a proof for quick checking.** Proof Copy/Print function lets you output a single test page to check results before you print the entire run – saving time and reducing wasted paper and toner.

**Enhanced printing and color management.** In addition to its built-in Emperon Print System, your bizhub is also designed to accept an optional Fiery Controller with powerful PostScript 3 printing and advanced color management capabilities.



### A cost-effective choice of finishers.

So you'll have the exact auto-finishing capabilities that fit your business needs:

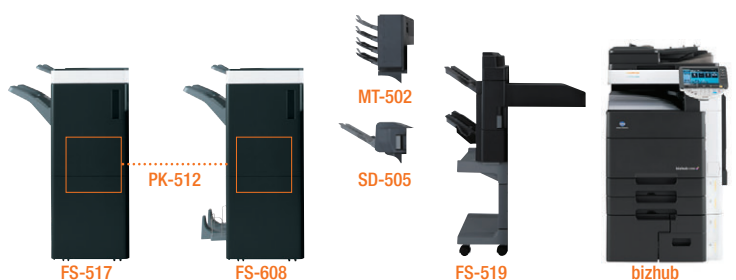
**FS-608<sup>4</sup>** – a powerful booklet finisher for all three bizhub models, with sorting, grouping, stapling and 80-page booklet-making capabilities in addition to half-fold and tri-fold support.

**FS-517<sup>5</sup>** – a basic staple finisher for all three bizhub models, providing 50-sheet stapling and customizable sorting, grouping and stapling functions.

**FS-519** – a built-in finisher specially designed for the bizhub C451, providing 50-sheet stapling, banner printing<sup>6</sup>, and customizable sorting, grouping and stapling functions – plus optional Mailbin, Saddle-Stitch Kit and Hole Punch Kit.

**PK-512** – an automated punch kit that adds 2/3-hole punch capability to your FS-517 or FS-608 Finisher.

**PI-503<sup>7</sup>** – a post-serter lets you add preprinted color or B&W cover sheets or chapter dividers to documents and reports.



<sup>4,5</sup> Currently available on bizhub C550/C650. Available for bizhub C451 Summer 2007. / <sup>6</sup> Banner printing only available for bizhub C451, when the FS-519 is installed. / <sup>7</sup> Available for bizhub C550 and C650 only.

## design for security: protection, distribution and control.

While you do business, bizhub design does something more: safeguards your information. The advanced security functions of bizhub range from password protection, encryption and HDD sanitizing to a sophisticated Biometric Authentication option that can recognize unique physical characteristics of each user. Why? Because in today's networked workflow, security is more essential than ever – and bizhub design meets the most stringent security precautions and regulations.

**Safeguard your most sensitive files.** With bizhub Secure Print, you can set password security locks in place on sensitive documents such as job estimates, employee evaluations, salary reports, business forecasts and sales figures.

**Protect documents as you scan.** Your bizhub can automatically create an encrypted PDF file during scanning. A password is required to open the file, so confidential data is protected as soon as it enters your workflow.

**Set privileges for individual users.** User Authentication features can be customized for printing, scanning, faxing and User Box functions – with users identified based on the Active Directory Server, NTLM V1 or V2 Server, NDS Server, LDAP Server or built-in bizhub authentication functions.



**More accurate than fingerprints.** The optional AU-101 Biometric Authentication Unit gives bizhub the ability to recognize users based on scanning finger vein patterns – a speedy authentication system that's virtually impossible to falsify and provides quick "touch-and-print" output because there's no need to remember a password or carry an ID card.

**Comprehensive security precautions.** With bizhub design, you'll have the power to protect sensitive information in all these ways:

**IP Filtering:** Registers the IP addresses of PCs that are allowed access or restricted access to your devices.

**SSL/TLS Encryption:** Protects data during exchange from bizhub to LDAP servers and PageScope programs.

**S/MIME Encryption:** The Secure Multipurpose Internet Mail Extensions encryption standard that protects Email exchanges.

**HDD Lock:** Applies password-protection locking to the hard disk drive of your bizhub, preventing it from being read even when removed from your device or any other bizhub.

**ISO 15408 EAL 3 Certified System Security:** Also known as "Common Criteria," the international standard for evaluating and certifying security implementations for IT-based products. Konica Minolta's Target Of Evaluation (TOE) for ISO 15408 certification applies to the entire MFP – providing system-wide, end-to-end security. (Currently in evaluation)

**Job erase without a trace.** After every job, the bizhub Job Erase feature can automatically overwrite your HDD up to three times – deleting any trace of job data in compliance with U.S. military standards for the Army (DoD 5220.22-M), Navy (NAVSOP P-5239-26) and Air Force (AFSSI5020).

**Copy Protect.** To prevent unauthorized re-copying of documents, a selection of concealed watermarks can identify printouts as reprints with hidden messages such as "Confidential" that only appear upon re-copying – no matter which device is used to re-copy.

**Secure disposal of your HDD.** Before moving, re-using or disposing of your hard disk drive, an HDD Sanitizing feature can overwrite and sanitize its data in 8 different modes to comply with 11 U.S. military and international security standards – including seven-times overwrite protection (AFSSI5020).

**Support for Encrypted Network Printing.** Print data can be encrypted via the print driver based on an alphanumeric string in the printer driver settings and the MFP's administrator mode. The encryption key must be 20 digits long.





General Specifications

	bizhub C451	bizhub C550	bizhub C650
TYPE:	Full-Color Printer/Copier/Scanner with Stationary Platen		
PRINT/COPY PROCESS:	Tandem Process		
TONER TYPE:	Simitri HD Color Polymerized Toner		
MONTHLY DUTY CYCLE:	150,000 pages	200,000 pages	250,000 pages
PRINT/COPY SPEED:	Full Color: 45 ppm (letter, portrait) B&W: 45 ppm (letter, portrait)	Full Color: 45 ppm (letter, portrait) B&W: 55 ppm (letter, portrait)	Full Color: 50 ppm (letter, portrait) B&W: 65 ppm (letter, portrait)
PRINT RESOLUTION:	1800 dpi equivalent x 600 dpi		
SCAN SPEED:	Full Color: 70 opm B&W: 70 opm		B&W: 75 opm
SCAN RESOLUTION:	200 dpi, 300 dpi, 400 dpi, 600 dpi		
SCAN FILE FORMATS:	TIFF, PDF, Compact PDF, JPEG		
MEMORY:	1,024 MB		
HARD DISK DRIVE:	60 GB		
GRADATION:	256 color shades per pixel		
ORIGINAL SIZE:	Up to 11 x 17 (scanning/copying)		
COPY SIZE:	Up to 11 x 17 full bleed on 12" x 18" paper (printing) Tray 1 (universal cassette): 5.5" x 8.5" to 12" x 18" Tray 2 (universal cassette): 5.5" x 8.5" to 12" x 18" Tray 3 (fixed cassette): 8.5" x 11" or 8.5" x 5.5" Tray 4 (fixed cassette): 8.5" x 11" or 8.5" x 5.5" Bypass Tray" 4" x 6" to 12" x 18"		
WARM UP TIME:	Less than 30 seconds		
FIRST COPY TIME:	Full Color: Less than 6.5 / B&W: Less than 4.8 seconds	Full Color: Less than 6.5 / B&W: Less than 4.3 seconds	Full Color: Less than 6 / B&W: Less than 3.8 seconds
COPY QUANTITY:	1-9,999		
MAGNIFICATION:	Zoom range: 25% - 400%, 0.1% increments Preset reduction: 79%, 73%, 65%, 50% Preset enlargement: 121%, 129%, 155%, 200%		
COLOR MODES:	Auto Color, Full Color, Black & White, 2-Color, Single Color		
COPY EXPOSURE MODES:	Text (legible text), Text/Photo (clear text and halftones), Photo (optimized for gradations), Map (fine edges and legible text), Dot Matrix (dot matrix or pencil originals), Copied Paper		
FAXING (optional):	Super G3 compatibility JBIG data compression 33.6 Kbps modem speed F-Code support MH, MR, MMR, JBIG		
DATA COMPRESSION:	Less than 2 seconds/page (JBIG, standard resolution)		
FAX TRANSMISSION SPEED:	1024 MB (shared copier memory)		
FAX MEMORY:	Text, Text/Photo, Photo, Dot Matrix		
FAX EXPOSURE MODES:	500-sheet universal cassette (17 lb. bond to 140lb. index) 500-sheet universal cassette (17 lb. bond to 140 lb. index) 1,000-sheet cassette (17 lb. bond to 140 lb. index) 1,500-sheet cassette (17 lb. bond to 140 lb. index) 150-sheet bypass (17 lb. bond to 100 lb. cover or up to 300 gsm)		
STANDARD PAPER SIZE:	6,650 sheets (total, with options)		
MAXIMUM PAPER CAPACITY	6,650 sheets (total, with options)		
DOCUMENT FEEDER (standard):	DF-611 Reversing Automatic Document Feeder Speed: Full Color: 70 opm, B&W: 70 opm		DF-610 Reversing Automatic Document Feeder Speed: Full Color: 70 opm, B&W: 75 opm
	Paper Capacity: 100 sheets Paper Size: 5.5" x 8.5" to 11" x 17" Paper Weight: Single-sided: 9.25" lb. bond to 55.75 lb. bond Double-sided or mixed: 13.25 lb. bond to 34lb. bond		
POWER REQUIREMENTS:	120V, 60Hz		
POWER CONSUMPTION:	Less than 1,920W		
DIMENSIONS (W x D x H)	25.5" x 30.5" (without control panel)/36" (with control panel) x 45.25"		
WEIGHT:	418.5 lb.		
OPTIONS:	WT-502 Working Table LU-301 Large Capacity Unit OT-503 Output Tray Unit (Exit Tray) FK-502 Fax Board ML-501 Multi-Line Kit SP-501 Fax Stamp Unit Spare TX Marker Stamp 2 SA-501 Scan Accelerator Kit (standard on C650) SC-503 HDD Encryption Kit EK-602 USB Host Board (Local I/F Kit) AU-101 Biometric Authentication Unit FS-517 (50) Sheet Staple Finisher* FS-608 Saddle Finisher* PK-512 Punch Kit for FS-517/608 (2/3 Holes) IC-409 Image Controller (EFI Fiery Controller)** VI-504 Video Interface Kit for IC-409 (standard on C650)		
	FS-519 Built-In Base Finisher		PI-503 Post Inserter
	SD-505 Saddle Stitcher Kit for FS-519		
	MT-502 Mailbin Kit for FS-519		
	OT-602 Output Tray for FS-519		
	PK-510 Punch Kit for FS-519		

\* Available Summer 2007 for bizhub C451

\*\* Available Summer 2007



General Specifications

AVAILABLE PRINT/COPY FUNCTIONS:

bizhub C451	bizhub C550	bizhub C650
Account Track (1,000 accounts), APS/AMS, Auto Duplex, Auto Reset, Auto Tray Switching, Banner Printing (C451 only with FS-519), Bi-Directional Communication (Device Option Setting), User Box Function, Color Modes & Functions (Auto Color/Full Color, Black & White Mode, Single Color Mode, 2-Color Mode, Color Adjustments - Brightness, Contrast, Saturation, Sharpness, Red, Green, Blue, Portrait, Hue, Density, Color Balance, Copy Density, Sample Copy), Copy Modes (Simplex/Duplex, 2-in-1, 4-in-1, 8-in-1, Book, Booklet, Booklet + Bind), Cover Mode, Creative Functions (Mirror Image, XY Zoom, Image Center, Base Color, Neg./Pos. Reverse, Image Repeat), Criss-Cross Sorting, Distribution No. Printing, Encrypted Network Printing, Energy Save Mode, Enlarge Display, Erase (Border, Frame, Edge) Mode, Finishing (Group, Sort, Staple, Punch, Half-Fold, Center Staple and Fold and Tri-Fold), Image Overlay, Glossy Mode, HDD Random Erase, Image Adjustments (Color Matching, Pure Black Auto ON/OFF Color Balance, Screen Settings, Image Smoothing ON/OFF), Image Density Adjustment (Density, Background Removal), Image Preview (Job Finishing Image Display, Engine Configuration Display), Interrupt, Job List, Job Erase, Job Reserve, LDAP, OHP Interleaving, Mixplex, Mix-Media, Program/Recall Jobs, Paper Size Selection (APS/Manual), Paper Type Selection (Normal, Thick 1/1+, Thick 2, Thick 3, Thick 4), Print Modes (Simplex/Duplex, 2-in-1, 4-in-1, 6-in-1, 9-in-1, 16-in-1, Booklet, Booklet + Bind), Proof Copy, Secure Printing, Separate Scan, Sleep Mode, Text Enhancement, User Authentication (Synchronize w/Account Track), Utility (Meter Count, Environment Setting, Default Setting, One-Touch Setting, Check Consumables Life, Admin. Mode, Watermarks, Zoom Selection (AMS, Fixed Zoom Ratio, User Programmable Zoom Ratio, Manual) Scan-to-Email, Scan-to-FTP, Scan-to-SMB (Scan-to-Desktop), Scan-to-HDD (Scan-to-User Box), Scan-to-USB*, Network TWAIN		

AVAILABLE SCAN FUNCTIONS:

AVAILABLE FAX FUNCTIONS:

Autodialing (2,000 one-touches), Auto Memory Reception, Auto Reduction Printing, Border Erase Function, Broadcasting (maximum 600 locations), Bulletin Board, Density Adjustment, Duplex Transmission/Reception, Exposure Mode (Text, Text/Photo, Photo, Dot Matrix), Group Dialing (up to 500 one-touches per group), Image Rotation Transmission/Reception, Mailbox (Private) Transmission/Reception, Memory/Quick Dial, Mixed Originals Transmission, Original Size Designation, Overseas Transmission Password Transmission/Reception, PC-Fax, Polling Transmission/Reception, Priority Transmission, Print Setting for Overnight Reception, Program Dialing (400 programs), Redial, Relay Broadcasting, Relay Transmission, Remote Reception, Timer Transmission		
---	--	--



Emperon Print System (standard):

PROCESSOR:

867 MHz

RAM:

1,024 MB (shared copier memory)

HDD:

60 GB (shared copier memory)

PAGE DESCRIPTION LANGUAGE:

PCL5c, PCL6 (XL version 3.0) Emulation, PS3 (version 3016), XPS (XML Paper Specification)

PRINT DRIVERS:

PCL6: Windows 2000, Windows XP (Home/Professional), Windows Server 2003, Windows XP Professional x64, Windows Server 2003 x64, Windows NT 4.0, Windows Vista (x32, x64)\*

PS3: Windows 2000, Windows XP (Home/Professional), Windows Server 2003, Windows XP Professional x64, Windows Server 2003 x64, Windows Vista (x32, x64)\*

Mac OS 9.2 (PPD file), Mac OSX 10.2, 10.3, 10.4, Intel-based 10.4 (print driver)

10BASE-T/100BASE-TX/1000BASE-T, High-Speed USB 2.0

INTERFACE:

PROTOCOLS:

TCP/IP, IPX/SPX, AppleTalk (EtherTalk), LPR, SMB, LPD, Netware (4.x, 5, 6), Pserver, Nprinter, NDPS, IPP 1.1, SMTP, POP3, LDAP, SSL/TLS, SNMP, HTTP/HTTPS, WSD\*

APPLICATIONS:

Network & Device Management:

PageScope NetCare

PageScope NDPS Gateway

PageScope EMS Plug-Ins

PageScope Network Setup

PageScope Data Administrator

Driver Packaging Utility

HDD Back-Up Utility

Log Management Utility\*

User Tools:

PageScope Web Connection

PageScope Direct Print

PageScope Print Status Notifier

Font Management Utility

Copy Protect Utility

Print Utility for Unix

bizhub vCare support

PageScope Workware

MANAGEMENT TOOLS:

OPTIONAL SOFTWARE:



Fiery IC-409 Embedded Image Controller:

PROCESSOR:

Intel Celeron 2.8GHz FSB 400MHz

OPERATING SYSTEM:

Linux

RAM:

512 MB (standard/max)

HDD:

80 GB

PAGE DESCRIPTION LANGUAGE:

PCL6, Adobe Postscript 3 (version 3017)

PRINT DRIVERS:

PCL: 45 fonts, Adobe PS3: 136 fonts

PCL6:

Windows 2000, Windows XP, Windows Server 2003, Windows Vista (x32, x64)\*

PS3:

Windows 2000, Windows XP, Windows Server 2003, Windows XP Professional x64\*, Windows Server 2003 x64\*, Windows Vista (x32, x64)\*

Mac OS X 10.3.9, 10.4, Intel-based 10.4\* (PPD)

10BASE-T/100BASE-TX/1000BASE-T, RJ45

INTERFACE:

PROTOCOLS:

TCP/IP, IPX/SPX, AppleTalk (EtherTalk), LPR, SMB, NDPS Gateway on Netware 5.0 or later, IPP, LDAP, SSL/TLS, SNMP, HTTP/HTTPS

OPTIONAL SOFTWARE:

EFI Color Profiler, ED-100 Densitometer, EFI Secure Erase, Hot Folders, Auto Trap, EFI Impose

\* Not available at time of launch

**bizhub** 



© 2007 KONICA MINOLTA BUSINESS SOLUTIONS U.S.A., INC. All rights reserved. Reproduction in whole or in part without written permission is prohibited. Konica Minolta and The essentials of imaging are trademarks of KONICA MINOLTA HOLDINGS, INC. bizhub, Data Administrator, Emperon, PageScope and Workware are trademarks of KONICA MINOLTA BUSINESS TECHNOLOGIES, INC. Simitri is a registered trademark of KONICA MINOLTA BUSINESS SOLUTIONS. All other brands and product names are registered trademarks or trademarks of their respective owners.

Design and specifications are subject to change without notice.

Some functions may require options, which may or may not be available at time of launch.



**KONICA MINOLTA**

**KONICA MINOLTA  
BUSINESS SOLUTIONS U.S.A., INC.**

100 Williams Drive  
Ramsey, NJ 07446

[www.kmbs.konicaminolta.us](http://www.kmbs.konicaminolta.us)  
[www.kmbs.konicaminolta.us/solutions](http://www.kmbs.konicaminolta.us/solutions)

